

±9,358 SF HIGH IMAGE CORPORATE HEADQUARTERS INDUSTRIAL/ R&D BUILDING

37 SHIELD DRIVE, IRVINE, CA 92618

FOR SALE



JEFF MITCHELL
SENIOR VICE PRESIDENT
949.263.5323
jmittell@voitco.com
Lic. #00972088

SHANE MITCHELL
ASSOCIATE
949.263.5318
smitchell@voitco.com
Lic. #02158130

RYAN OSTERKAMP
ASSOCIATE
949.263.5324
rosterkamp@voitco.com
Lic. #02194839

Voit
REAL ESTATE SERVICES



2020 Main Street, Suite 100
Irvine, CA 92614
www.VoitCo.com

Licensed as Real Estate Salespersons by the DRE. The information contained herein has been obtained from sources we deem reliable. While we have no reason to doubt its accuracy, we do not guarantee it. ©2024 Voit Real Estate Services, Inc. All Rights Reserved.

±9,358 SF HIGH IMAGE CORPORATE HEADQUARTERS INDUSTRIAL/ R&D BUILDING

FOR SALE

37 SHIELD DRIVE, IRVINE, CA 92618

PROPERTY DESCRIPTION:

- ±9,358 SF Industrial / R&D Building
- ±4,564 SF Highly Upgraded Office Space
- ±1,000 SF Level 8 Class 10,000 Clean Room (Verify)
- Three (3) 12x14 Ground Level Doors
- Power-400 Amps, 120/208 Volt Service
- 22' Warehouse Clearance
- 2.5:1,000 SF Parking Ratio (23 Stalls)
- Fenced Yard Possible
- Built in 2007
- Immediate 405/5/133 Freeway Access



JEFF MITCHELL
SENIOR VICE PRESIDENT
949.263.5323
jmittell@voitco.com
Lic. #00972088

SHANE MITCHELL
ASSOCIATE
949.263.5318
smitchell@voitco.com
Lic. #02158130

RYAN OSTERKAMP
ASSOCIATE
949.263.5324
rosterkamp@voitco.com
Lic. #02194839

Voit
REAL ESTATE SERVICES



2020 Main Street, Suite 100
Irvine, CA 92614
www.VoitCo.com

Licensed as Real Estate Salespersons by the DRE. The information contained herein has been obtained from sources we deem reliable. While we have no reason to doubt its accuracy, we do not guarantee it. ©2024 Voit Real Estate Services, Inc. All Rights Reserved.

±9,358 SF HIGH IMAGE CORPORATE HEADQUARTERS INDUSTRIAL/ R&D BUILDING

37 SHIELD DRIVE, IRVINE, CA 92618

FOR SALE



JEFF MITCHELL
SENIOR VICE PRESIDENT
949.263.5323
jmitchell@voitco.com
Lic. #00972088

SHANE MITCHELL
ASSOCIATE
949.263.5318
smitchell@voitco.com
Lic. #02158130

RYAN OSTERKAMP
ASSOCIATE
949.263.5324
rosterkamp@voitco.com
Lic. #02194839

Voit
REAL ESTATE SERVICES



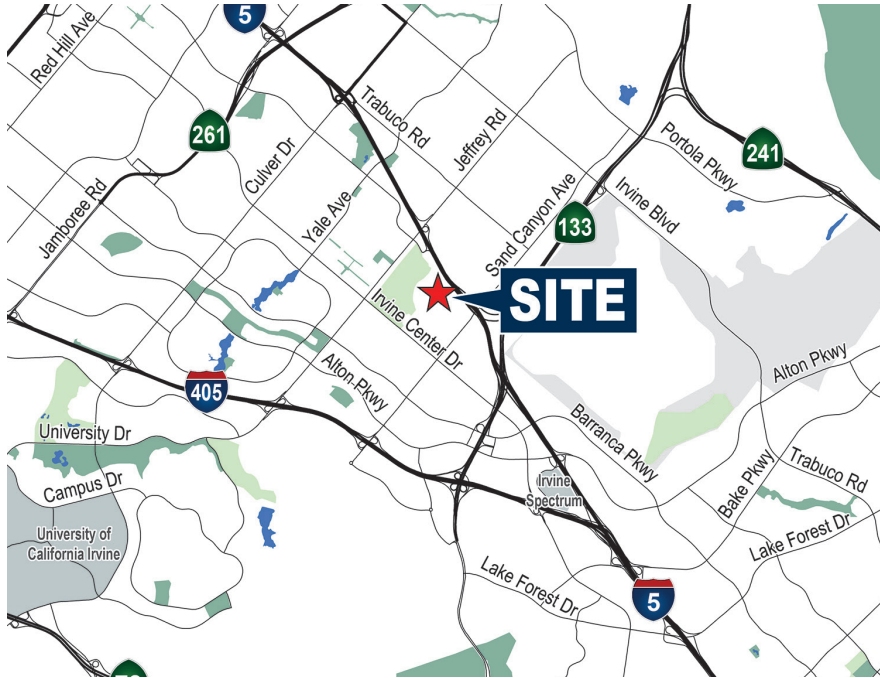
2020 Main Street, Suite 100
Irvine, CA 92614
www.VoitCo.com

Licensed as Real Estate Salespersons by the DRE. The information contained herein has been obtained from sources we deem reliable. While we have no reason to doubt its accuracy, we do not guarantee it. ©2024 Voit Real Estate Services, Inc. All Rights Reserved.

±9,358 SF HIGH IMAGE CORPORATE HEADQUARTERS INDUSTRIAL/ R&D BUILDING

FOR SALE

37 SHIELD DRIVE, IRVINE, CA 92618



JEFF MITCHELL
SENIOR VICE PRESIDENT
949.263.5323
jmitchell@voitco.com
Lic. #00972088

SHANE MITCHELL
ASSOCIATE
949.263.5318
smitchell@voitco.com
Lic. #02158130

RYAN OSTERKAMP
ASSOCIATE
949.263.5324
rosterkamp@voitco.com
Lic. #02194839

Voit
REAL ESTATE SERVICES



2020 Main Street, Suite 100
Irvine, CA 92614
www.VoitCo.com

Licensed as Real Estate Salespersons by the DRE. The information contained herein has been obtained from sources we deem reliable. While we have no reason to doubt its accuracy, we do not guarantee it. ©2024 Voit Real Estate Services, Inc. All Rights Reserved.

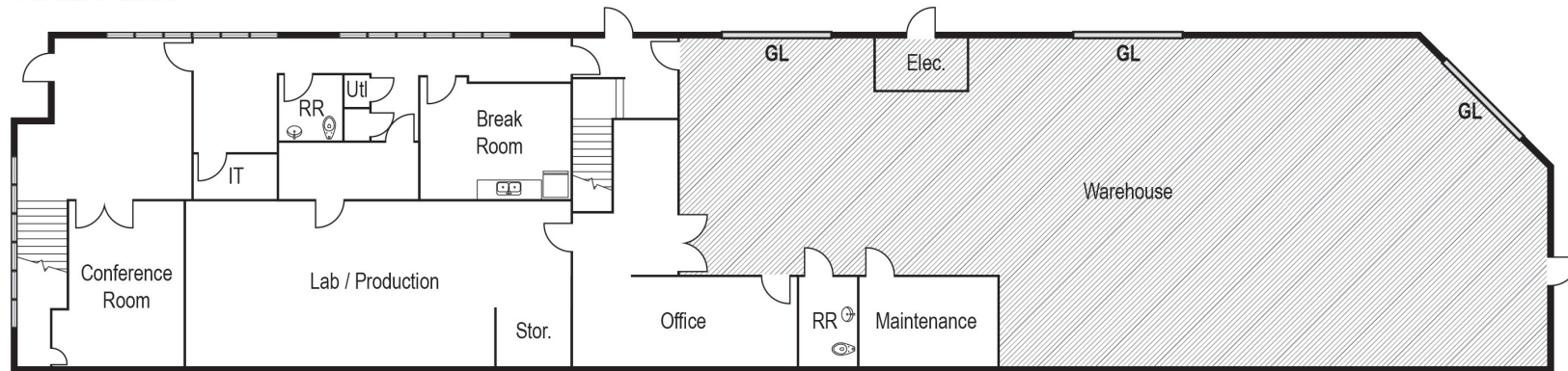
±9,358 SF HIGH IMAGE CORPORATE HEADQUARTERS INDUSTRIAL/ R&D BUILDING

FOR SALE

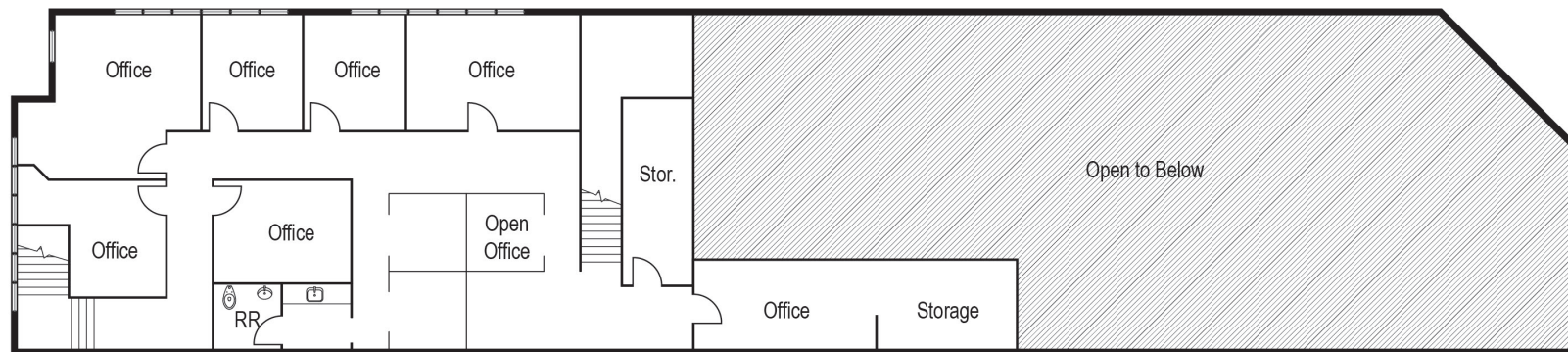
37 SHIELD DRIVE, IRVINE, CA 92618

Floor Plan

First Floor



Second Floor



JEFF MITCHELL
SENIOR VICE PRESIDENT
949.263.5323
jmitchell@voitco.com
Lic. #00972088

SHANE MITCHELL
ASSOCIATE
949.263.5318
smitchell@voitco.com
Lic. #02158130

RYAN OSTERKAMP
ASSOCIATE
949.263.5324
rosterkamp@voitco.com
Lic. #02194839

Voit
REAL ESTATE SERVICES



2020 Main Street, Suite 100
Irvine, CA 92614
www.VoitCo.com

Licensed as Real Estate Salespersons by the DRE. The information contained herein has been obtained from sources we deem reliable. While we have no reason to doubt its accuracy, we do not guarantee it. ©2024 Voit Real Estate Services, Inc. All Rights Reserved.

±9,358 SF HIGH IMAGE CORPORATE HEADQUARTERS INDUSTRIAL/ R&D BUILDING

37 SHIELD DRIVE, IRVINE, CA 92618

FOR SALE



JEFF MITCHELL
SENIOR VICE PRESIDENT
949.263.5323
jmittell@voitco.com
Lic. #00972088

SHANE MITCHELL
ASSOCIATE
949.263.5318
smitchell@voitco.com
Lic. #02158130

RYAN OSTERKAMP
ASSOCIATE
949.263.5324
rosterkamp@voitco.com
Lic. #02194839

Voit
REAL ESTATE SERVICES

**MITCHELL
OSTERKAMP**
INDUSTRIAL GROUP

2020 Main Street, Suite 100
Irvine, CA 92614
www.VoitCo.com

Licensed as Real Estate Salespersons by the DRE. The information contained herein has been obtained from sources we deem reliable. While we have no reason to doubt its accuracy, we do not guarantee it. ©2024 Voit Real Estate Services, Inc. All Rights Reserved.